

Discover product in details



FLEX

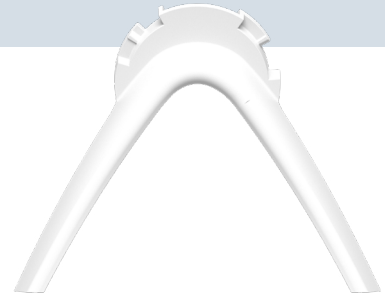
Removable stand

Nexelec

www.nexelec.eu

Reference	Conditioning
M060A	Unitary

70 mm



80 mm

Net weight: 5 g

FUNCTIONS



Reliable and robust

Specially designed for NEXELEC detectors



Free-standing

Allows a detector to be mounted on a table or piece of furniture. Convenient for moving the device from one room to another.



Quick installation

15 seconds are all it takes to remove the base and clip on the removable FLEX bracket



Easy assembly

Simplifies installation without a mounting base. No holes in the wall and no need for special tools

FEATURES

Removable stand

Polycarbonate plastic

Set contents

1 removable stand

Conditions of use

Indoor environment
Temperature: -10°C to +50°C
Humidity: 0% RH to 99% RH (non-condensing)

Mounting ⁽¹⁾

Free installation
To be used exclusively with NEXELEC detectors

Compatible detectors

Smoke detectors: INSAFE / INSAFE+ / ORIGIN / ORIGIN+ / GUARD / GUARD+ / GUARD
Carbon monoxide detectors: SECURE / SECURE+ / AIR / AIR+
Heat detectors: HEAT+ / WARM

Fully recyclable



⁽¹⁾ Please refer to § «Installation» of the NEXELEC detectors user manual.